

One-stop for Access Covers

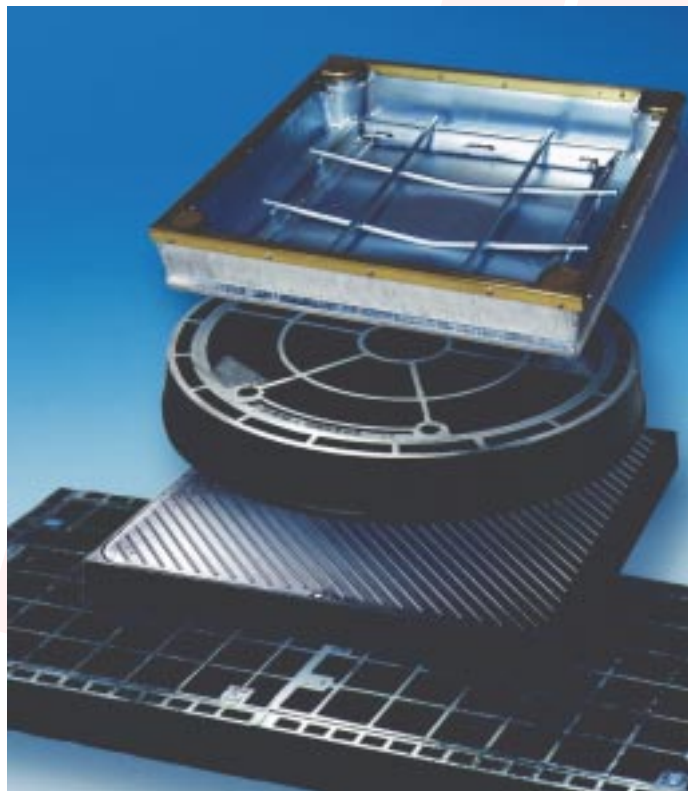
ACO Polycrete has launched ACO ACCESS™, the most comprehensive range of access cover systems in Australia.

As a world leader in supplying solutions to the construction industry, ACO is constantly developing its product range. The launch of **ACO ACCESS™** provides the industry with a complete range of solutions to suit all commercial and industrial applications, loadings and sizes from the most comprehensive range of access covers available.

All covers are certified to AS3996 (Australian Standard for access covers and road gully grates and frames) and are available in a variety of load classes from Class A 10kN to Class G 900kN.

The range comprises:

- **Rhinocast™** - Ductile iron solid top & recessed durable systems designed for strength, durability and economy.
- **Urbanfil™** - Architectural steel recessed covers and frames, ideal for pavers and tiles.
- **Hermelock™** - Lightweight, heavy-duty composite access covers systems with unique hermetic sealing capabilities.
- **Servokat™** - Gas cylinder assisted lift access covers, ideal for light to heavy-duty industrial and commercial applications.



“All products are fully detailed in the new 44 page, full colour, technical handbook.”



ACO ACCESS™ also offers fire rated access cover systems.

All products are fully detailed in the new 44 page, full colour, technical handbook.

The **ACO ACCESS™** handbook provides information on correct selection and installation of access covers, dependent on the pavement areas or loadings.

ACO's Design Services can also offer additional advice and assistance to select the access cover best suited to any application.



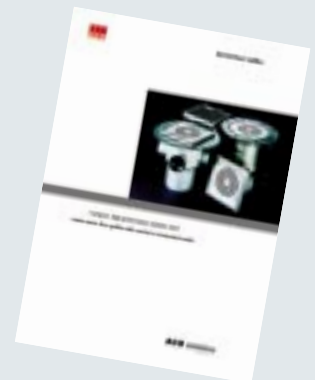
This Issue



New Technical Handbook
See adjacent



New Scheduling Service
Inside



Stainless Steel Gullies
See rear cover

For further product information, or, CAD specification disks for installations, contact your nearest sales office.

Sydney Rapid Bus Transitway

ACO Polycrete Pty Ltd has been successful in providing over 1650 metres of Q200 Channel to various contractors on the prestigious Transitway Project.

The first link in the rapid bus Transitway network runs between Liverpool and Parramatta in Western Sydney. At a cost of \$260 million, this 30 kilometre link opened in February.

The Transitway is a 'Bus Only' road designed to speed up the flow of traffic around the outlying suburbs of Sydney. This will decrease travelling time on public transport and increase its popularity, whilst decreasing the number of cars on Sydney roads and also the ever-increasing level of vehicular emissions.

The **ACO DRAIN Q200 Channel** was specified on the tender documentation supplied in a grey colour to match in with the bluestone kerbing.

The Government Authority which has jurisdiction over the project is very happy with the installed product and the service given by ACO personnel.

"The Q200 Channel was specified ... and supplied in a grey colour to match bluestone kerbing."

ACO DRAIN Q Channel drainage has been used extensively throughout Europe and the United Kingdom in road applications. **ACO DRAIN Q200 Channel** is well suited to the Australian market due to its ability to capture and disperse runoff efficiently.



This is the first major road project in Sydney where the **ACO DRAIN Q Channel System** has been used. Previously ACO has supplied **ACO DRAIN S and K Channel Systems** for roadworks.

Also supplied on the same project were quantities of **ACO DRAIN K Channel, ACO ACCESS™ Rhinocast™ Ductile Iron Covers, ACO ACCESS™ Urbanfil™ Galvanised Steel Infill Covers and ACO CABLEMATE Polymer Concrete Electrical Pits.**

Easy access to underground

Situated a short walk away from Lygon Street and Melbourne CBD, the Uropa Apartments complex comprises 173 apartments in three separate buildings titled Milano, Prague and Vienna.

Leading architects Hayball Leonard Stent were responsible for the design. Multiplex are the builders for this project.

ACO supplied a **16 Part, Class D, Rhinocast™ Multipart Cover and Frame complete with Fire Rated Cover** on Concrete Ledges. The clear opening for the unit is 2895 x 2760mm.

Due to the large size of the unit, **ACO** recommended unit assembly and checking prior to concrete filling of the covers for ease of handling and to ensure correct fit.

ACO's Design Services provided comprehensive installation instructions regarding preforming of rebates, unit installation, backfilling and cover fill.

"The clear opening of the unit is 2895 x 2760mm."

The multipart cover is situated in the main driveway over the substation for the complex, hence the need for fire rated covers.



Roma St Parklands, Brisbane

Covering 16 hectares and located in the heart of the Brisbane CBD is the recently renovated Roma St Parklands Project. The \$60m project has transformed the area with spectacular horticultural displays, distinctive architecture, sweeping vistas and unique artwork. The parkland is believed to be the world's largest subtropical garden located in a city centre.



The parkland area was used as a market area until mid 1960's. The close proximity to Roma St Railway Station, was ideal for the marketing of fresh produce and live animals.

After the markets were closed the area became a goods yard used by Queensland Rail.

Some key areas within the parkland include The Spectacle Garden, The Lake Precinct, Celebration Lawn, The Forest and the Activity Centre.

ACO was asked to play a significant role in the development of this unique project. With a project this size there is a lot of work involved with the various site services. These services included electrical reticulation, lighting and communications. The landscape architect wanted the access points for these services to be as discreet as possible.

ACO ACCESS™ Urbanfil Pavermate™ Recessed Galvanised Steel Covers not only provided the required aesthetic features but also enabled, due to their deep pan, pavers to be laid in the cover without being cut down and thus weakened. Over 300 various sized ACO ACCESS™ Urbanfil™ Recessed Galvanised Steel Covers were used throughout the project.

In large pavement areas around the parkland, ACO's Design Services was able to provide exact hydraulic data for all recommended ACO DRAIN systems.

"ACO was asked to play a significant role in the development of this unique project."

ACO also custom made a galvanised steel Heelguard grate to address safety concerns of areas with high pedestrian traffic. Over 400m of ACO DRAIN System K100 and K200 were used throughout the project. ACO DRAIN K Channel with it's built in galvanised steel edge rail proved to be an ideal restraining edge for the various surface finishes.

New Scheduling Service Available

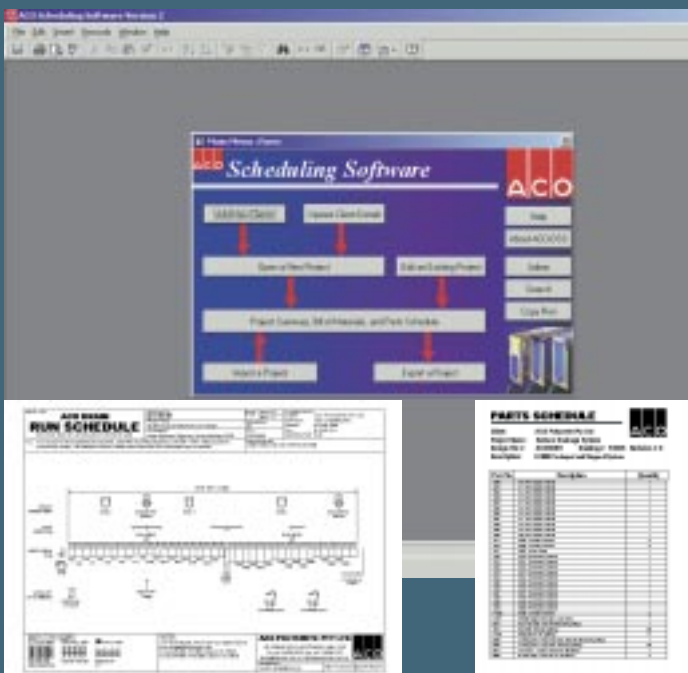
ACO is continuing to develop its technical services by offering customers an increasing number of free, professionally documented, design services to support customers of its product range.

ACO SS is a drain-scheduling programme developed by ACO to generate quick, neat and accurate run schedules illustrating long sections of ACO DRAIN runs. The schedule is designed to assist the customer identify all channels, gratings and auxiliary components that comprise each run. The programme also generates for each run schedule, a corresponding bill of quantities.

This free facility is offered without obligation to customers of ACO Polycrete. The service may be used for individual runs or for large projects containing several runs and can be presented, faxed or emailed directly to the customer without delay.

ACO's Design Services Department also provide optimum drainage designs and installation details. The department is staffed by fully qualified engineers.

For further information, email: technical@acoaus.com.au



Long Red Streak at Pt Adelaide

South Australia's major port, Port Adelaide, handles approximately 1,000 ship visits per year carrying general and containerised cargo.



Berths 18 - 20 were recently given a facelift with a regrade of the apron including the drainage and runoff collection system.

500 metres of ACO DRAIN S200, heavy-duty surface drainage system were specified by consultants Maunsell. The system's heavy-duty construction, with Class G gratings secured by 8 locking bolts per metre, makes it ideal to withstand years of severe loading from the vehicles that will traffic this busy maritime operation.

A red coat of paint on the grating gives the apron a distinctive streak. A bold statement accentuated by its industrial surrounds.

For further information, visit our website:

<http://www.acoaus.com.au>

or, contact your nearest sales office:

New South Wales

185 Briens Road
Northmead NSW 2152
Telephone 02 9630 2788
Facsimile 02 9630 2733
email sales@acoaus.com.au

Victoria

9 Overseas Drive
Noble Park VIC 3174
Telephone 03 9795 3666
Facsimile 03 9795 6444
email acovic@acoaus.com.au

Queensland

467 Tufnell Road
Banyo QLD 4014
Telephone 07 3267 8700
Facsimile 07 3267 8711
email acoqld@acoaus.com.au

Sales Agents

South Australia

Bianco Building Supplies
Telephone 08 8336 6666
Facsimile 08 8336 6655

Western Australia

GSE Distributors
Telephone 08 9344 1566
Facsimile 08 9344 1872

Northern Territory

Brasswares Agencies
Telephone 08 8947 0019
Facsimile 08 8947 0349

Tasmania

Buildtech Supplies
Telephone 03 6273 5800
Facsimile 03 6273 4977

New Zealand

Mico Pipelines and Plumbing
Telephone 09 622 0963
Facsimile 09 622 0943

Stainless Steel Floor Gullies

The ACO STAINLESS range of E150 Floor Gullies offer compact, high performance floor drainage solutions for a wide variety of applications.



Manufactured in austenitic stainless steel, the gullies are nonmagnetic and therefore ideal for hygiene applications.

Available in either 304 or 316 grade stainless steel to meet a range of performance and cost requirements.

Suits vinyl, tile, epoxy and concrete floor finishes.

Gully options include: side inlets, choice of grate and edge detail and 110mm or 75mm horizontal outlet.

All products are fully detailed in the new 12 page, full colour, technical handbook.

We Have Moved, Brisbane

ACO has moved its Brisbane office. The larger premises house the state administration and sales offices as well as a showroom and warehouse.



The new address is:

467 Tufnell Road
Banyo QLD 4014
Telephone 07 3267 8700
Facsimile 07 3267 8711

Postal Address is:

PO Box 160
Banyo QLD 4014



ACO Polycrete Pty Ltd

ACN 050 102 942

Head Office Administration

185 Briens Road
Northmead NSW 2152
Telephone 02 9630 2788
Facsimile 02 9630 2733