

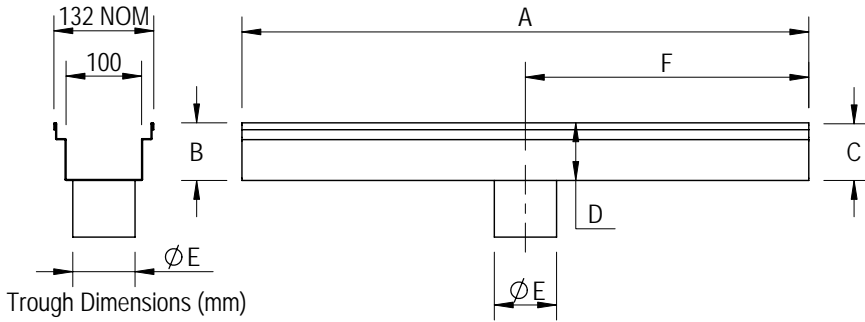


CUSTOM SPECIFICATION DRAWING

ACO Polycrete Pty Ltd.
134-140 Old Bathurst Road
Emu Plains, NSW 2750
Tel: 02 4747 4000
Fax: 02 4747 4060
e: technical@acoaus.com.au

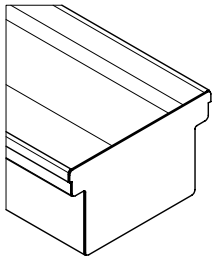
DRWG# FE1002
www.acoaus.com.au

System 100 - Folded Edge with Centre Outlet

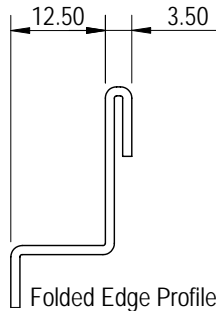


Required Information (enter details in space provided)		
A	Overall Length	mm
B	Upstream 1 Overall Depth	mm
C	Upstream 2 Overall Depth	mm
D	Downstream Overall Depth	mm
E	Outlet Diameter	mm
F	Outlet Location	mm

Endplate Option

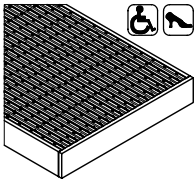


Simple Flat Endplate

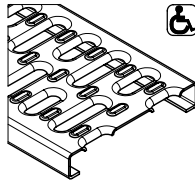


Folded Edge Profile

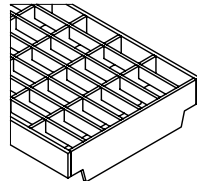
Grate Options (select a grate)



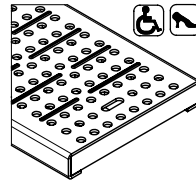
- Heelguard 100 Class A
- Heelguard Antislip 100 Class C



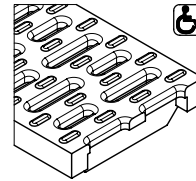
- Slotted 100 Class A
- Slotted 100 Class D



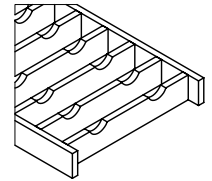
- Mesh 100 Class D



- Perforated 100 Class D



- Composite 100 Class D



- Ladder 100 Class D
- Ladder Antislip 100 Class D



SPECIFICATION CLAUSE

ACO Polycrete Pty Ltd.
134-140 Old Bathurst Road
Emu Plains, NSW 2750
Tel: 02 4747 4000
Fax: 02 4747 4060
e: technical@acoaus.com.au

DRWG# FE1002
www.acoaus.com.au

System 100 - Folded Edge with Centre Outlet

The floor drain troughs are to be ACO Stainless **System 100** as supplied by ACO Polycrete Pty Ltd. All components used within the scope of the system shown on **Drawing No(s)**._____*. All work should be carried out strictly in accordance with the installation details set out on **Drawing No.**_____*.

All components are to be manufactured from austenitic stainless steel **Grade 304/316/(other)**_____*.

System to be supplied with **Constant Depth/Sloped*** troughs with the overall depths specified as in **Drawing No.**_____*.

Troughs to be supplied complete with **Folded Edge** edge profile, in the specified **lengths/layout*** according to **Drawing No.**_____*. Position and nominal size of outlet as detailed in

Drawing No._____*.

Grates to be **Part No.**_____*, **with/without*** bolt locking devices.

***Please delete or complete where appropriate.**