

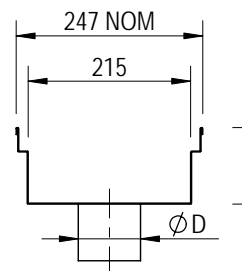


# CUSTOM SPECIFICATION DRAWING

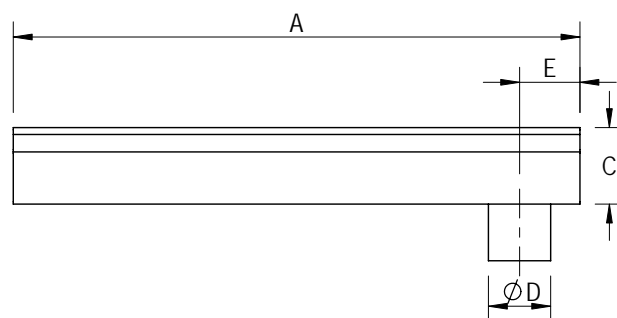
ACO Polycrete Pty Ltd.  
134-140 Old Bathurst Road  
Emu Plains, NSW 2750  
Tel: 02 4747 4000  
Fax: 02 4747 4060  
e: technical@acoaus.com.au

DRWG# FE2001  
www.acoaus.com.au

## System 200 - Folded Edge with End Outlet

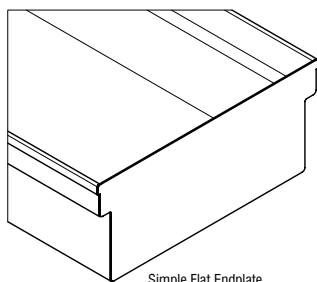


Trough Dimensions (mm)

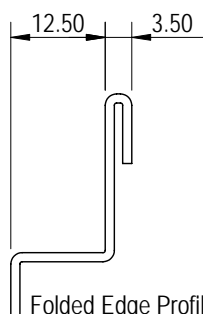


| Required Information (enter details in space provided) |                          |    |
|--|--------------------------|----|
| A  | Overall Length           | mm |
| B  | Upstream Overall Depth   | mm |
| C  | Downstream Overall Depth | mm |
| D  | Outlet Diameter          | mm |
| E  | Outlet Location          | mm |

### Endplate Option

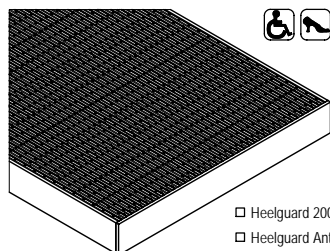


Simple Flat Endplate

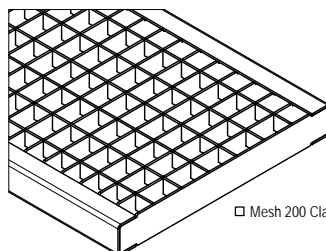


Folded Edge Profile

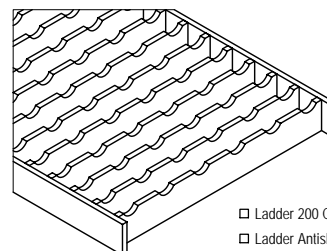
### Grate Options (select a grate)



☐ Heelguard 200 Class A  
☐ Heelguard Antislip 200 Class B



☐ Mesh 200 Class C



☐ Ladder 200 Class D  
☐ Ladder Antislip 200 Class D



# SPECIFICATION CLAUSE

ACO Polycrete Pty Ltd.  
134-140 Old Bathurst Road  
Emu Plains, NSW 2750  
Tel: 02 4747 4000  
Fax: 02 4747 4060  
e: technical@acoaus.com.au

DRWG# FE2001  
www.acoaus.com.au

## System 200 - Folded Edge with End Outlet

The floor drain troughs are to be ACO Stainless **System 200** as supplied by ACO Polycrete Pty Ltd. All components used within the scope of the system shown on **Drawing No(s).**\_\_\_\_\_. All work should be carried out strictly in accordance with the installation details set out on **Drawing No.**\_\_\_\_\_.

All components are to be manufactured from austenitic stainless steel **Grade 304/316/(other)**\_\_\_\_\_.

System to be supplied with **Constant Depth/Sloped\*** troughs with the overall depths specified as in

**Drawing No.**\_\_\_\_\_.

Troughs to be supplied complete with **Folded Edge** edge profile, in the specified **lengths/layout\*** according to

**Drawing No.**\_\_\_\_\_. Position and nominal size of outlet as detailed in

**Drawing No.**\_\_\_\_\_.

Grates to be **Part No.**\_\_\_\_\_, **with/without\*** bolt locking devices.

**\*Please delete or complete where appropriate.**