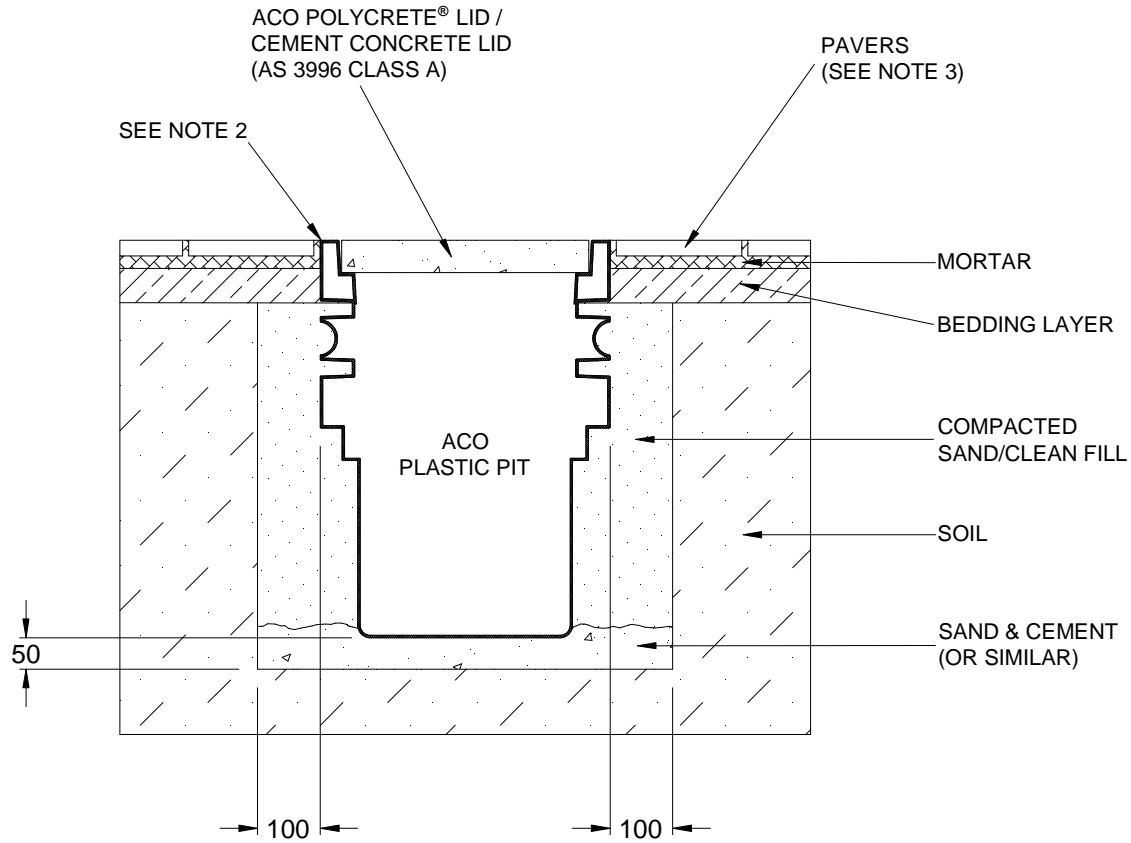


ACO CABLEMATE®	PLASTIC PIT INSTALLATION DRAWING	
DRWG# XCHC-AP-3	With Polycrete® Lid / Cement Concrete Lid	
Pavers: For 330kg Nominal Wheel Load		



NOTES:

1. Specific site conditions may require an increase in these dimensions or reinforcement. It is the customer's responsibility to ensure the installation drawing is detailed for the application and pit structure is protected from undue stress.
Engineering advice may be required.
2. The finished level of the pavers must be flush with the top of the pit.
3. The paver course adjacent to the pit edge must be mortared in place.
4. Refer to ACO's latest installation instructions for complete details.

ACO CABLEMATE®	PLASTIC PIT SPECIFICATION CLAUSE	ACO Polycrete Pty Ltd Australia Ph: 1300 765 226 www.acoaus.com.au
DRWG# XCHC-AP-3	With Polycrete® Lid / Cement Concrete Lid	
ACO Limited New Zealand Ph: 0800 448 080 www.aconz.co.nz		

The cable enclosure(s) (for a nominal wheel load of 330kg) with a *clear opening(s)* of shall be **ACO Polyethylene Plastic Pit(s) Type (s)** and *part no.(s)* with **Polycrete® lid(s) / Cement Concrete lid(s) and part no.(s)**

All materials and components within the scope of the system shall be obtained from ACO and the work shall be carried out as specified in accordance with the manufacturer installation recommendations.