
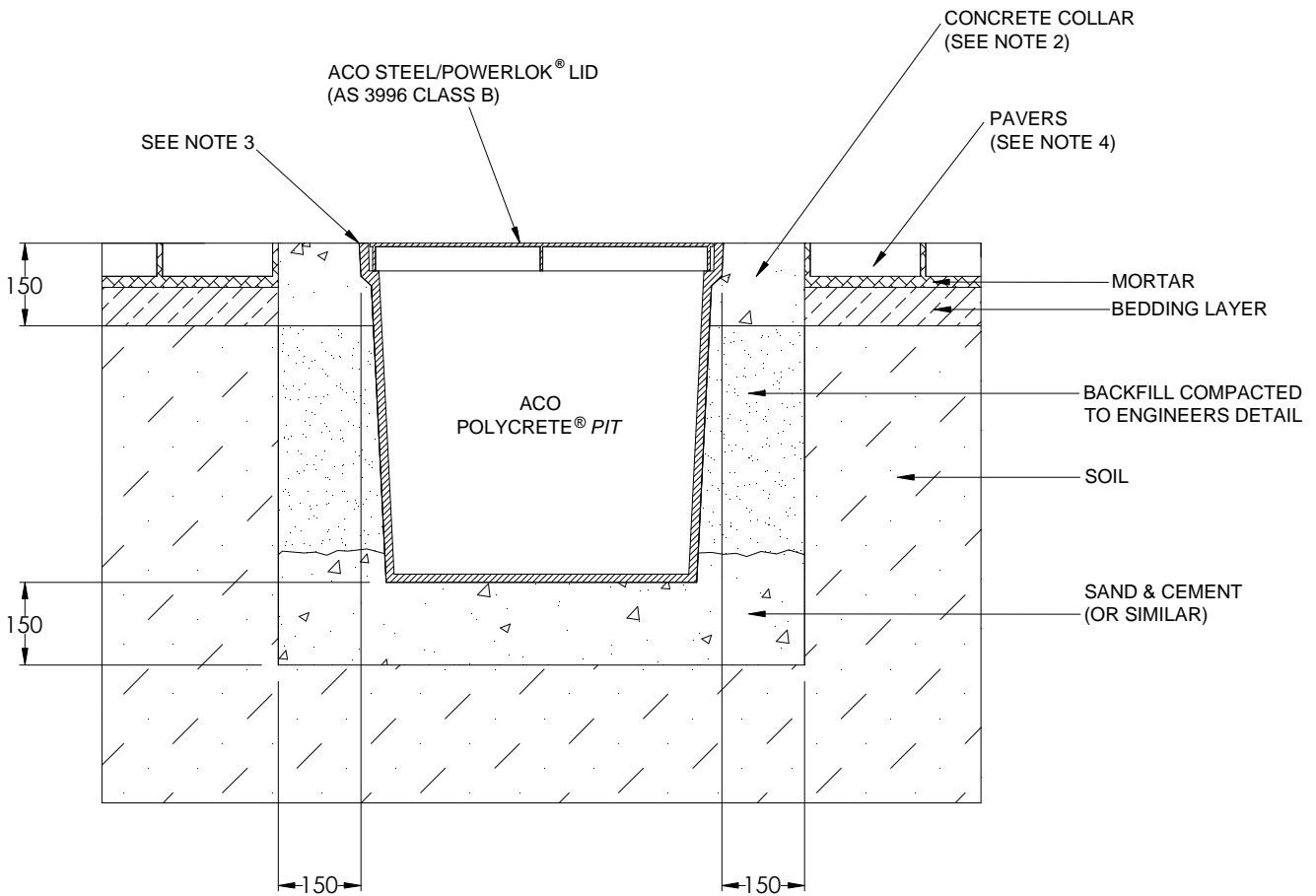


<b>ACO CABLEMATE®</b>	<b>POLYCRETE® PIT INSTALLATION DRAWING</b>	
DRWG# XCPG-CP-3	<b>With Steel / PowerLok® Lid</b>	
<b>Pavers: For 5000kg Nominal Wheel Load</b>		



**NOTES:**

1. Specific site conditions may require an increase in these dimensions or reinforcement. It is the customer's responsibility to ensure the installation drawing is detailed for the application and pit structure is protected from undue stress.  
*Engineering advice may be required.*
2. A minimum concrete strength of 25MPa is recommended for the collar. The concrete should be vibrated to eliminate air pockets.
3. The finished level of the concrete collar must be flush with the top of the pit.
4. The paver course adjacent to the concrete collar must be flush with the collar and must be fully bonded to the mortar.
5. Refer to ACO's latest installation instructions for complete details.

<b>ACO CABLEMATE®</b>	<b>POLYCRETE® PIT SPECIFICATION CLAUSE</b>	ACO Polycrete Pty Ltd Australia Ph: 1300 765 226 <a href="http://www.acoaus.com.au">www.acoaus.com.au</a>
DRWG# XCPG-CP-3	<b>With Steel / PowerLok® Lid</b>	ACO Limited New Zealand Ph: 0800 448 080 <a href="http://www.aconz.co.nz">www.aconz.co.nz</a>

The cable enclosure(s) (for a nominal wheel load of 5000kg) with a *clear opening(s)* of ..... shall be **Polycrete® Pit(s) Type (s)** ..... and *part no.(s)* ..... with Steel / **PowerLok®** lid(s) and *part no.(s)* .....

All materials and components within the scope of the system shall be obtained from ACO and the work shall be carried out as specified in accordance with the manufacturer installation recommendations.