

# Technical Bulletin

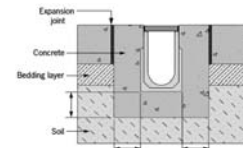


## LIGHTPOINT

### – INSTALLATION GUIDE

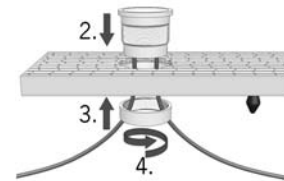
The Lightpoint system is designed for use with ACO **KLASSIKDRAIN™** KS100 and **SLABDRAIN™** H100KS systems. The KS100 and H100KS system comprise a full range of modular channels with lockable grates, end caps and accessories.

For KS100 and H100KS installation details, visit:  
[http://www.acoaus.com.au/pdf/site\\_installation\\_manual.pdf](http://www.acoaus.com.au/pdf/site_installation_manual.pdf)



### Fitting Lightpoint to the Heelguard™ Antislip Stainless Grate

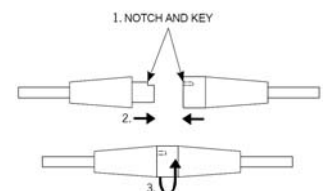
1. Unscrew the threaded ring from the LED fitting.
2. Slide the leads and LED fitting through the top of the grate.
3. Place the leads through the threaded ring and slide the ring up to the underside of the grate.
4. Screw and tighten the threaded ring to the LED fitting by hand to lock the LED fitting onto the grate.



### Cabling Operations

- The 240V AC input lead on the supply unit must be hard wired by a qualified electrician to the power source.
- The 24V DC output lead on the supply unit enters the ACO Drain system via a 20mm diameter hole drilled through the end cap and is connected to the first LED fitting.
- The supply unit can support up to 30 LED fittings.
- All leads (including interconnecting leads if required) outside of the ACO Drain channels must be laid safely in a sand bedding to prevent damage to the components.
- Leads must not be shortened or modified. If leads are defective, replace with new ones.
- Ensure the leads are laid in such a way that they are protected against tensile and shear forces.
- To prevent the penetration of moisture, avoid sharp bends in the leads. The bending radius should not be less than 50mm. Do not expose connectors to bending or other mechanical stresses during installation.
- The connectors on the leads must be free of dirt and foreign objects.
- A termination plug is required to protect the connector on the last LED fitting from damage, dirt and foreign objects.
- The male and female connectors must be plugged into one another and locked to prevent accidental disconnection. The connectors are locked together as follows:

1. Align the key on the male end with the notch on the female end.
2. Slide the connectors fully together.
3. Push the sleeve on the female end over the connection and turn it until it locks.



Bulletin No.: TB200801 Amendment 2  
Date: 3 June 2010  
Issued By: DC

Page 1 of 2

U:\Technical Services\Internal releases & image data base\releases\Technical Bulletins\TB Drafts\TB200801\TB200801 Amendment 2.doc



ACO Polycrete Pty Ltd  
134-140 Old Bathurst Road  
Emu Plains NSW 2750  
Telephone (02) 4747 4000  
Facsimile (02) 4747 4040  
Email: [technical@acoaus.com.au](mailto:technical@acoaus.com.au)

## Lightpoint Care

- Clean the Lightpoint LED fittings with water only.
- Flame weeding in the vicinity of the Lightpoint is not permitted.



### Important notes:

**Do not switch the power on until all LED fittings and the supply unit is properly interconnected and secured.**

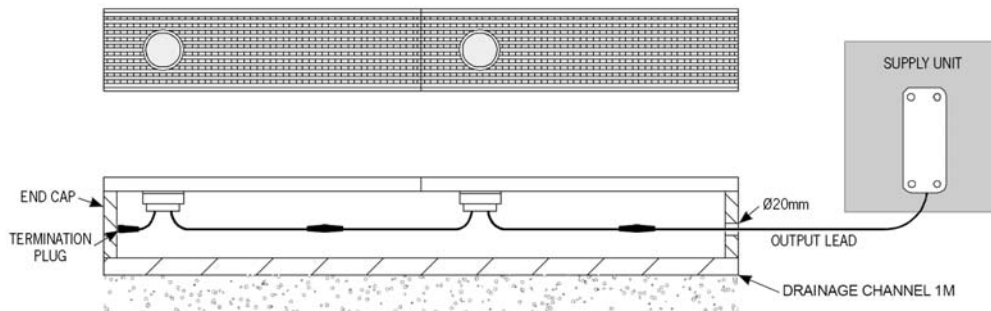
**The LED fitting, leads and connectors must not be immersed permanently in water.**

## Installation Examples

### Scenario A: Two lights in 2m channel sections

Components required:

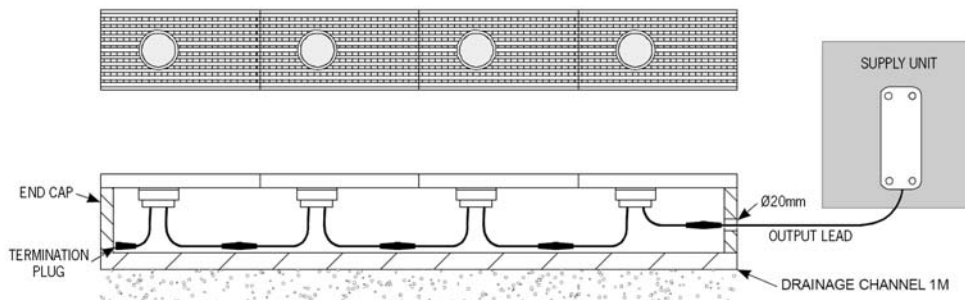
- 2 x KS100 or H100KS channel – 1m
  - 2 x KS100 or H100KS end cap
  - 2 x Type 447QLP **Heelguard™** Antislip Grate with LED fitting – 1m
  - 4 x QuickLok bar
  - 1 x Supply unit 24V DC 100VA Transformer
  - 1x Termination plug
- (Interconnecting extension leads if required)



### Scenario B: Four lights in 2m channel sections

Components required:

- 2 x KS100 or H100KS channel – 1m
  - 2 x KS100 or H100KS end cap
  - 4 x Type 448QLP **Heelguard™** Antislip Grate with LED fitting – 0.5m
  - 4 x QuickLok bar
  - 1 x Supply unit 24V DC 100VA Transformer
  - 1x Termination plug
- (Interconnecting extension leads if required)



## Disposal



Always dispose the product responsibly and accordingly to your state requirements.