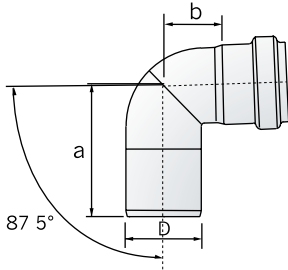
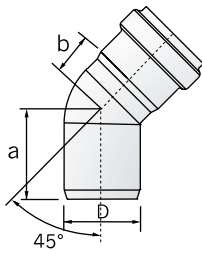


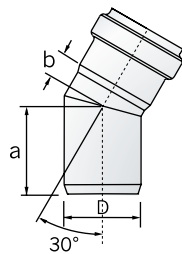
Bends



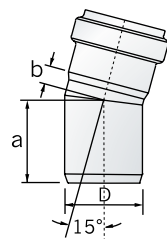
External Ø D (mm)	Dim. a (mm)	Dim b (mm)	Weight (kg)	Grade 304 Part No	Grade 316 Part No
87.5° bend					
50	86	40	0.2	98700	98750
75	107	53	0.4	98702	98752
110	134	67	0.7	98704	98754
160	181	105	1.7	98706	98756



Ø D	a	b	Weight	304	316
45° bend					
50	62	24	0.2	98708	98758
75	76	32	0.3	98710	98760
110	93	42	0.5	98712	98762
160	131	55	1.3	98714	98764



Ø D	a	b	Weight	304	316
30° bend					
50	57	16	0.2	98716	98766
75	71	21	0.3	98718	98768
110	85	27	0.5	98720	98770
160	110	40	1.2	98722	98772



Ø D	a	b	Weight	304	316
15° bend					
50	54	12	0.1	98724	98774
75	66	16	0.3	98726	98776
110	78	15	0.4	98728	98778
160	99	29	1.0	98730	98780

Notes:

EPDM seals supplied as standard - Viton seal available to order - contact ACO for details.