

## Installation

### ACO Vinyl Seal®

#### Sealing vinyl sheet flooring to drainage channels and gullies

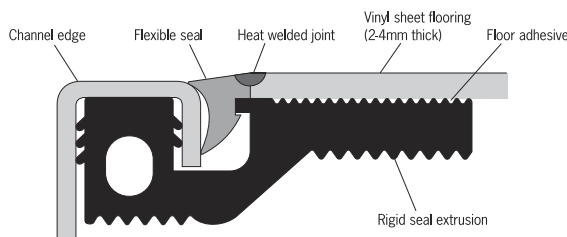
Vinyl sheet is a common flooring finish in many of the areas where stainless steel drainage channels and gullies are required. Previously the standard method of jointing the two was by a mechanical clamping system.

Although functional, this mechanical clamping mechanism can be cumbersome to fit and increase the potential areas for bacterial growth.

In order to overcome the frequently encountered problems of achieving watertight and bacteria free seals, ACO has developed the ACO Stainless Vinyl Seal a unique solution that will enable quick, easy and economical installation. ACO Stainless Vinyl Seal® provides a completely watertight and bacteria free seal. It can also be easily removed and re-sealed when the vinyl is replaced or refurbished without the need to disturb the channel or supporting detail in any way.

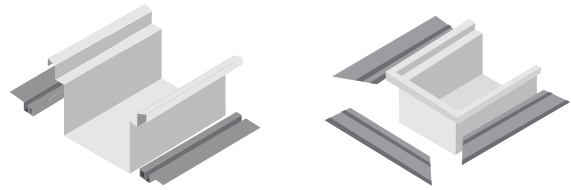
This method of sealing requires no additional tools or skills than those required for the professional fitting of vinyl sheet flooring, making the installation quick, easy and economical.

The seal is significantly more cost effective than the traditional mechanical type and is designed to fit ACO's Stainless stainless steel drainage channels.

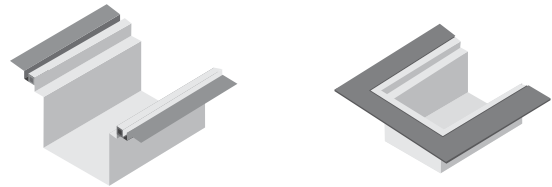


(Patent applied for)

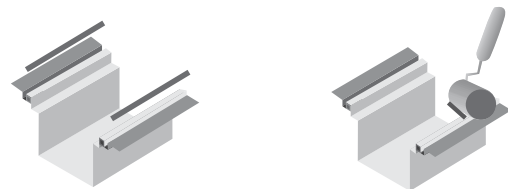
Cut the ACO Stainless Vinyl Seal® rigid PVC co-extrusion to the required lengths to fit exactly round all edges of the assembled channel – do not forget to allow for the mitred ends. Cut and notch the extrusion to form internal and external mitres as required.



Press the rigid extrusion into the recess at the edge of the channel ensuring it is pushed fully home. Peel back the fabric tape protecting the channel edge in preparation for fitting the flexible PVC seal.



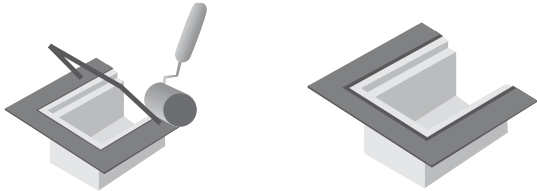
Press the flexible PVC seal into position between the stainless steel channel and rigid PVC extrusion making sure that the concave section of the seal faces TOWARDS the channel edge and that the groove in the flexible seal engages with the notch on the rigid extrusion (it may help to lubricate the flexible seal when inserting, using a soapy solution). For an even finish roll the flexible seal into position using a small decorator's roller.



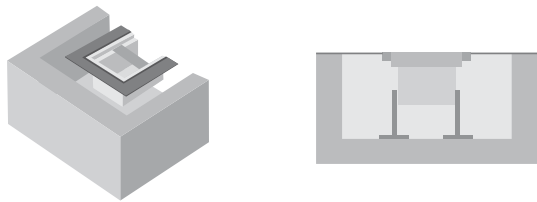
## Installation

### ACO Vinyl Seal®

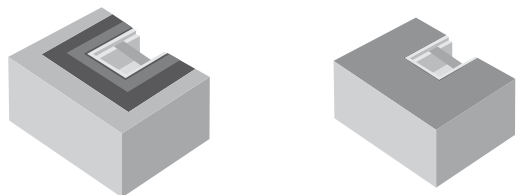
Ensure the assembled ridged and flexible Vinyl Seal® sits square and horizontal in the channel detail.



Install the channel into the ground ensuring that the flooring screed is flush to the top edge of the rigid PVC extrusion. Protect the channel and seal assembly from splashes of concrete/screed.



Depending upon the installation, additional suitable fixings may be required to secure the rigid extrusion to the floor substrate. If this should be required, separately drill and countersink the rigid extrusion making sure that all fixings are finished flush with the top of the extrusion.



Grout any voids at connecting rigid PVC joints at mitred corners, straight joints or fixings, to ensure a continuous supported floor finish.

Prior to laying the vinyl sheet flooring, peel the protective film from the rigid extrusion (a knife may be required to cut the film adjacent to the flexible seal) and ensure all surfaces are clean and dry.

When preparing the vinyl sheet material and floor surface, apply a compatible adhesive also to the top surface of the rigid PVC extrusion, for example, Altrofix 19 two-part water resistant urethane adhesive taking care not to apply adhesive to the flexible seal. This is to ensure the vinyl sheet floor is reliably anchored over its full area.

Cut/lay the sheet flooring against the flexible seal edge and prepare the welded joint between the flexible seal and vinyl sheet flooring as normal by scoring the sheet/seal joint to approximately half the depth of the sheet flooring thickness.

Either in-colour or black welding filler rod may be used to weld the joint. Remove surplus weld material from the joint using a spatula when the welded joint has cooled.